

Special Staff Announcement

A Message From Jim Gove, President:

In this newsletter, I have taken the opportunity to highlight some of the unique capabilities of the GES staff, as well as the services that we provide. With the unfolding pattern of new regulations, from increased emphasis on vernal pools, to the enactment of a revised shoreland protection act, new stream crossing guidelines and a revision to the Alteration of Terrain rules, I see new challenges to site development and permitting. These challenges include greater emphasis on wildlife habitat, indirect impacts, habitat fragmentation and restoration of degraded ecosystems. The interest and expertise of our staff reflect our commitment to meeting these new challenges.

In these difficult economic times, I have also taken the opportunity to list some of our primary services and the value we can provide to clients who are in search of new project sites or need permitting services. Our past newsletters may be found on our website, www.gesinc.biz. In the future, we will be following the changing regulatory landscape and reporting on the implications that may have on project development.

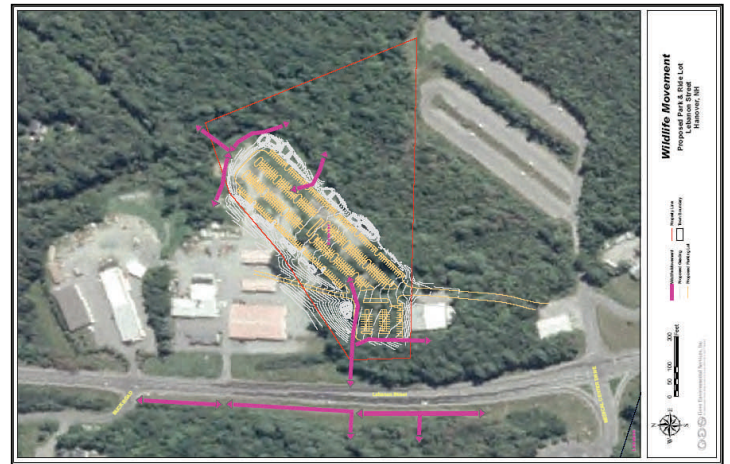


Luke Hurley ~ Vice President and Field Work Manager

GES is pleased to announce that Luke Hurley has been promoted to Vice President of Gove Environmental Services, Inc. This new role reflects Luke's wide range of responsibilities at GES. As a senior wetland scientist and ecologist, Luke specializes in delineating wetlands, project impact assessments, wildlife habitat evaluations, and permitting. As Field Work Manager, he coordinates all wetland and soil analyses. He will pair your project with a GES staff member based on your project's special needs. Luke is also our resident wildlife specialist. As GES Inc.'s wildlife specialist, he is able to conduct inventories of rare, threatened and endangered species and wildlife habitat assessments.

Brendan Quigley ~ Wetland Scientist, GIS Specialist

Brendan Quigley's considerable experience as a wetland scientist includes permitting and wetland issues in Massachusetts. His expertise is a great asset to GES, allowing us to expand our services to broader reaches of New England. At GES, Brendan specializes in wetland delineations and mitigation monitoring, and is also our GIS specialist. Using GIS, Brendan can create sophisticated maps of wetland resources areas, habitat types, and other natural resource features from available on-line data with little or no time in the field. Brendan also coordinates the use of our Trimble GEO XT, which allows us to gather sub-meter mapping-grade data for use on our GIS maps. This data can also be incorporated on to site plans for preliminary planning purposes.



Lindsay O'Reilly ~ Soil and Wetland Scientist

Lindsay O'Reilly's primary roles at GES are delineating wetlands, soil mapping, mitigation monitoring, and permitting assistance. In addition to the latter, she provides consultations for stream restoration and erosion control. Working with Certified Erosion Control-NH, Lindsay is involved in the restoration design of a severely eroded stream located in Northern New Hampshire. This project combines her knowledge of wetlands and soils, stream restoration and bioengineering.



GOVE ENVIRONMENTAL SERVICES, INC.

8 Continental Drive, Bldg, 2, Unit H, Exeter NH 03833-7507
Ph (603) 778 0644 / Fax (603) 778 0654
www.gesinc.biz / info@gesinc.biz

GES Staff Directory

(603) 778-0644

- Jim Gove– Principal x15
- Luke Hurley x11
- Lindsay O'Reilly x19
- Brendan Quigley x17
- Administrative x0

Or info@gesinc.biz



*Focused on Diligence,
Responsiveness and Quality*

What We Do

- Wetland Delineation & Permitting
- Soil Mapping & Analysis
- Wetland Restoration & Mitigation
- GIS Analysis
- Wildlife Habitat Assessments
- Sediment & Erosion Control
- Construction Monitoring

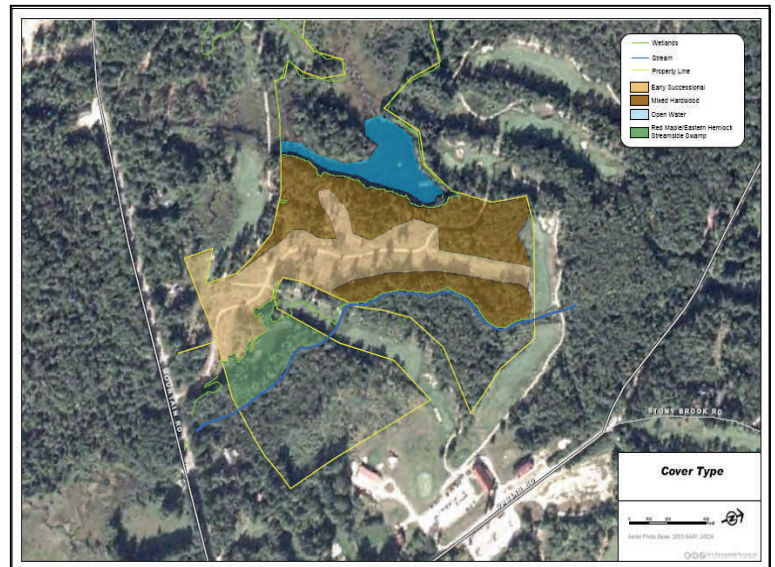
Assessments for New Sites

*Looking for land, but don't know how to assess
if the parcel fits your development needs?*

GES has nearly 20 years experience conducting preliminary land evaluations for large and small-scale development projects. We provide a quick, thorough site assessment with a sketch of wetland areas and other design limitations, as well as documentation of poorly and very poorly drained soils. We will perform these preliminary evaluations for a fee based on acreage to include:

- Wetland and Soils Assessment
- Information Request for Rare, Threatened and Endangered Species and Sites of Historical Significance
- State and Municipal Wetland Setbacks & Buffer Restrictions

<u>Acre</u> s	<u>Cost</u>
1-5	\$450.00
5-10	\$600.00
10-20	\$750.00
20+	\$50.00/Acre



Permit Applications

Have a project with wetland or shoreland buffer impacts that requires a State permit?

GES has nearly 20 years of experience in preparing Dredge and Fill and Shoreland Applications under the State of New Hampshire Wetlands Bureau and Comprehensive Shoreland Protection Act. The NH DES has adopted new Wetland Regulations over the past year and a new, more stringent Comprehensive Shoreland Protection Act as of July 1, 2008. GES has a history of success with applications, along with an excellent reputation and working relationship with all levels of local, state, and federal governments. Our experience ensures that your application is done right the first time, resulting in a quicker review time and approval process to get your project started.

We can provide you with competitive lump sum pricing that includes application preparation, attendance at Town Meetings, NHI and SHPO Information Requests, and follow-up of status.

Leave the application and permitting process to those that know it best,
Gove Environmental Services, Inc.



Conscientious, Collaborative, Indispensable...